

Risk Management/ Biosecurity



Presented by:
Theresa Lubbinge



DIAG
POULTRY



• BIOSECURITY

- “**BIO**” = Life
- “**SECURITY**” = All the measures that are taken to protect a place, or to ensure that only people with permission enter it or leave it

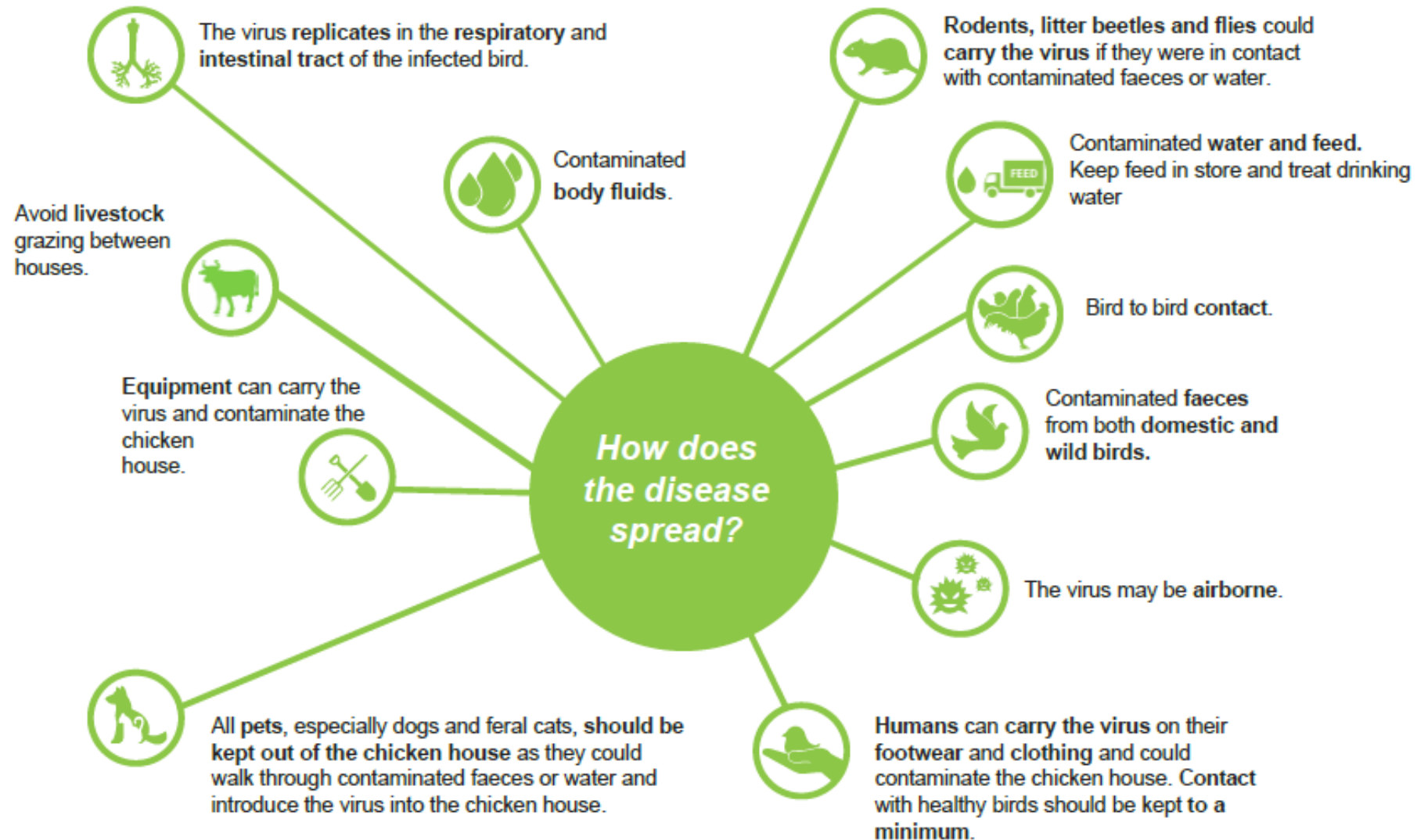
*Preventative measures to **reduce risk** of infectious disease transmission into an animal population*

Especially in intensive systems but also any area where animals (and humans) exposed to any form of Possible disease or potential health threat



The BIG Picture

Mode of Transmission





Start by using the correct product at the correct dilution



Check
Colour

What can I do, to protect the farm?

Disinfect Vehicle cab and hands of the driver



Make sure everyone use the Foot dip Driver, Visitors and Employees



Personnel: Boots or Foot dips

OPTION 1: Double Gumboot System (Preferable)

The ideal is to introduce two pairs of boots in **different colours** e.g. white boots outside, and black boots inside the poultry house. The inside pair must not leave the poultry house.



Walkways:

Apply Chlorinated Lime to walkways between Shower block (Ablutions) to chicken houses and between chicken houses.

OPTION 2: FOOT BATHS

The ideal would be to have two foot dips in place.



The First Foot Bath: Add a detergent- disinfectant like **Chlor - F** (mix 100 ml in 10 liters water). Have a brush available to scrub boots thoroughly to remove any manure, mud or organic material that are stuck to the sole of the boots.

Or Dry Foot Dip with Chlorinated Lime



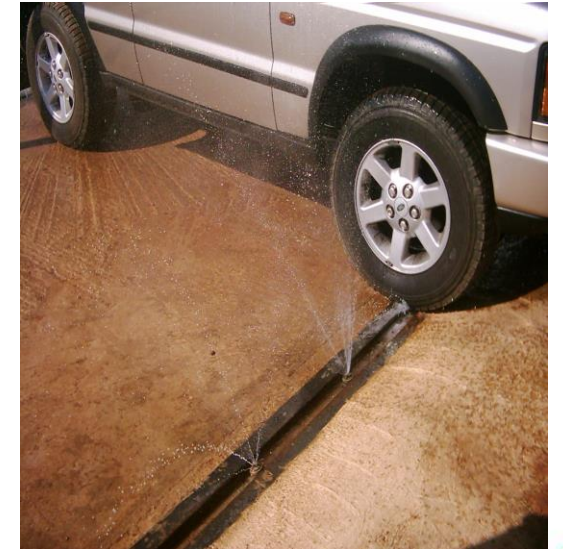
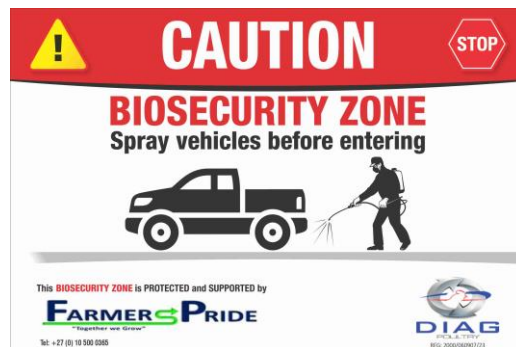
The Second Foot Bath: Place a disinfectant using one of the following products: Add **FP Glut** (50 ml per 10 liter water), or **FP Ultra** (50 ml per 10 liter water), or **Glut - San** (50 ml per 10 liter) solutions to the foot baths. **Replace daily.**



Foot bath



Spraying of vehicles that enter the farm



Make sure everything is working properly



Make sure everyone showers in before entering chicken Houses

**Shower with antiseptic detergent like
Showergel / Shower Fresh**



Ablution facilities should always be clean

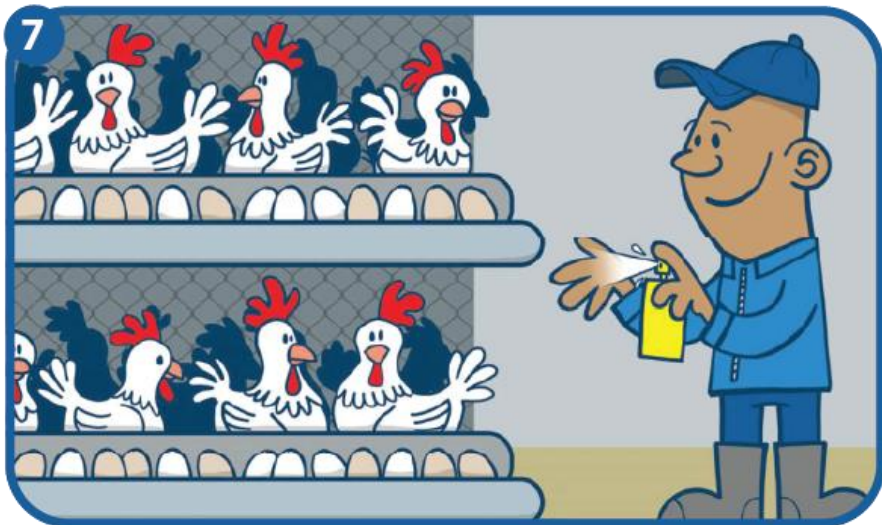
Used product like Chlor F



Make sure persons entering disinfect their hands Even after showering



Make sure persons disinfect their hands after handling **birds, garbage** **and mortalities**



ANYTHING can bring disease to your chickens

Movement of people and equipment



Stop any non - essential movement of people or vehicles onto the farm.



Feed trucks and other vehicles must be disinfected before entering the site. Use **San Quat** (1 : 200), or **San - 31** (1 : 100) as a vehicle disinfectant.



Feed truck and chick delivery drivers should not get out of the vehicle, and if they have to, they should wear disposable overalls and boot covers, which should be disposed of at the farm after use.



Spray all equipment with a disinfectant (**FP Glut**, 1 : 200), before taking them into the house.

Make sure persons wash their Boots before entering the farm and a chicken house

1st dip water / soap 2nd disinfectant





FOOT BATH WITH DISINFECTANT



BIOSECURITY ZONE



DIP YOUR BOOTS
Before entering

This **BIOSECURITY ZONE** is PROTECTED and SUPPORTED by

FARMER & PRIDE
"Together we Grow"

Tel: +27 (0) 10 500 0365



FOOT BATH Stories



FOOT BATH Stories

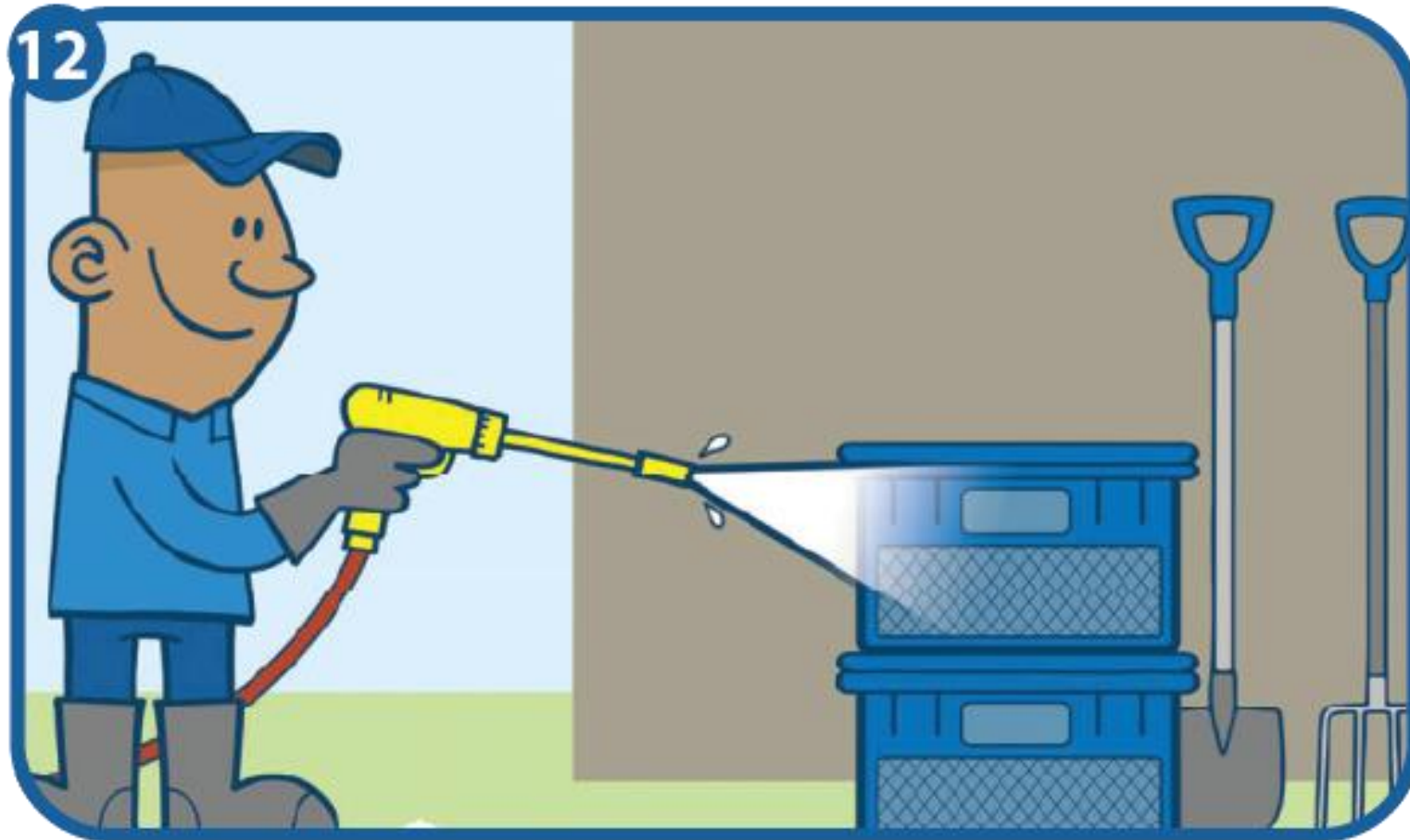


I AM NOT AN
EARLY BIRD OR
A NIGHT OWL
I AM SOME
FORM OF
PERMANENTLY
EXHAUSTED
PIGEON



ANYTHING can bring disease to your chickens

Wash and disinfect equipment entering and exiting the Chicken house or farm



Cleaning the houses

1st Dry clean, 2nd Wet clean (water)
Then apply detergent



Cleaning the site starts with removal of the manure

- The manure inside and outside the houses
- The little contaminated soil can be disinfected with FP Black.



Cleaning the houses

1st Dry clean



Outside of houses



Where can disease hide?



Where can disease hide?



Where can disease hide?



Clean Before You Disinfect!!





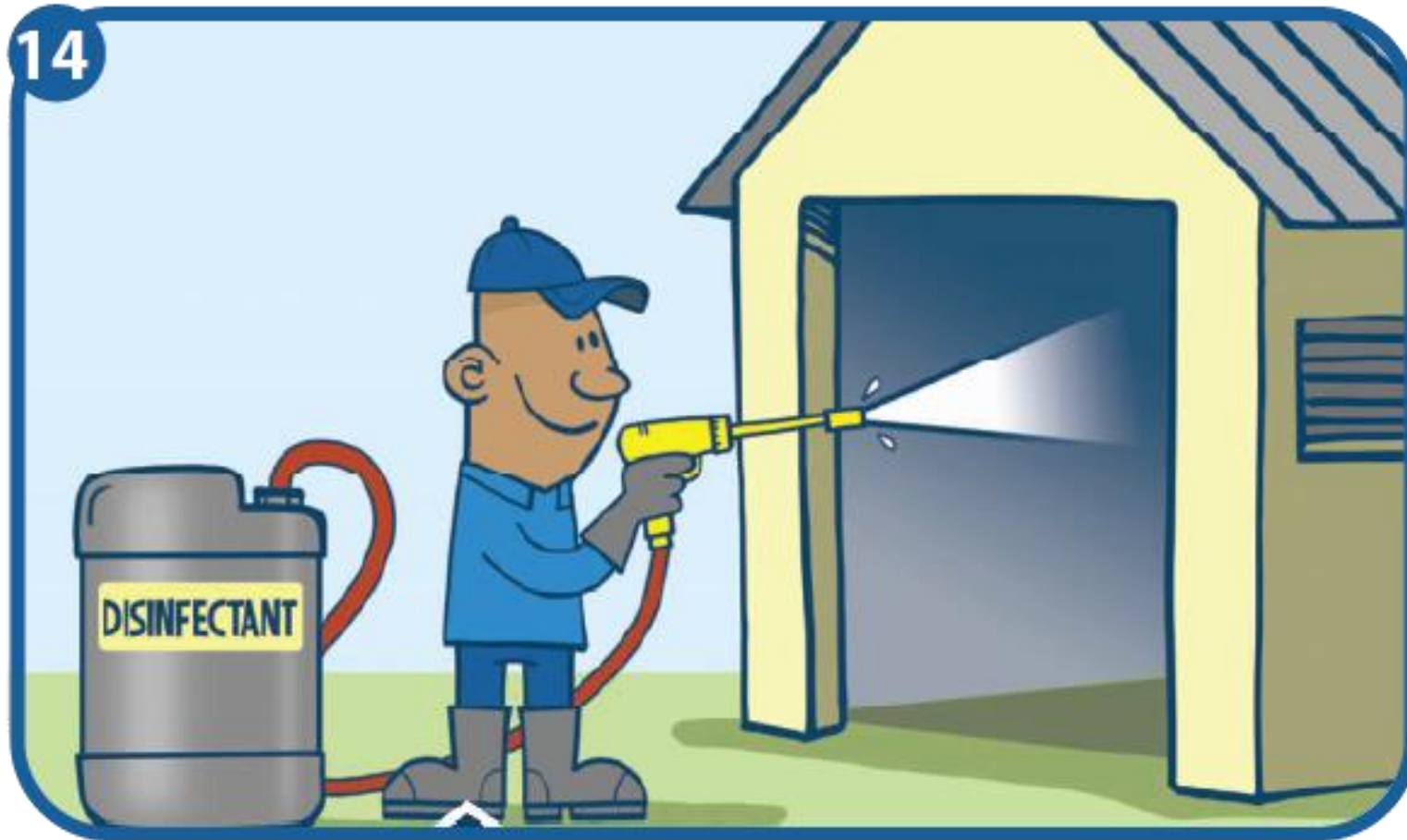
Clean Before You Disinfect!!



Make sure the product foams properly – Contact time



After rinsing off the Detergent – Now Disinfect



Make sure the product foams properly – Contact time

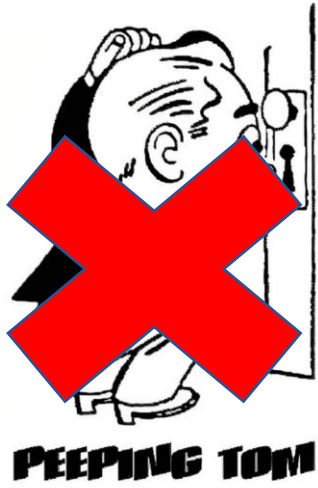




Keep grass short between the houses, and remove wild bird nests, eggs, faeces and feathers.



Make sure persons exiting shower out



Make sure laundry is washed and dried properly



Do you Know?

AI Virus survival times

On Feathers:

15 days at 20°C

160 days at 4°C



In Manure:

7 days at 20°C

35 days at 4°C



AI Virus survival times



- 21 days at 54°C in dried egg white
- Broken eggs can contaminate egg trays, trolleys and tables.



*"She hasn't said a word to anyone since she laid it.
Talk about shell shock!"*



10 days – mortalities, composted or buried

AI Virus survival times

3 days on people and clothes



- 30 days at 28° C in water
- 158 days at 17° C



What else can bring diseases onto the farm?



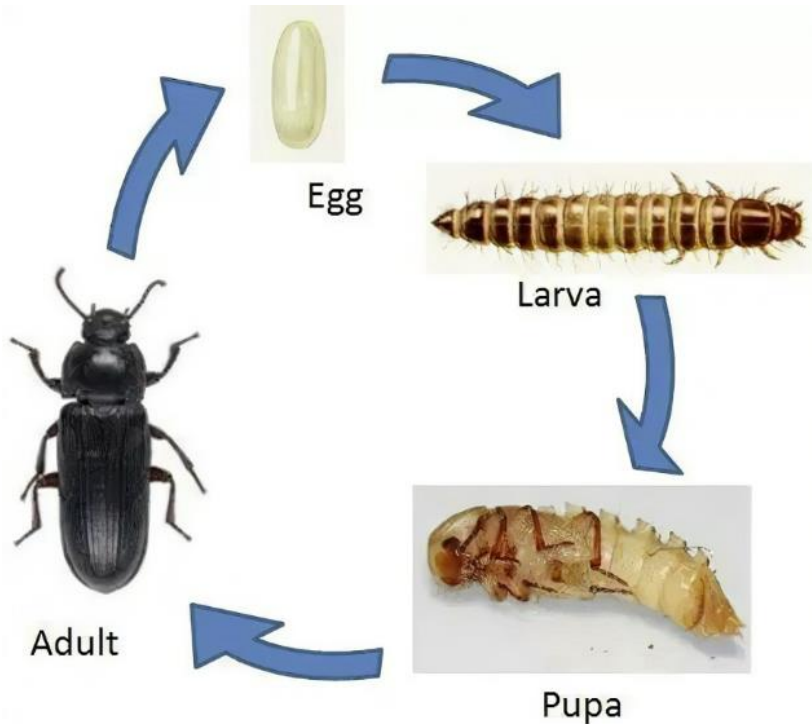
Roof Rat
5-10oz
10-12" long



House Mouse
.5-1oz
5.5-7.5" long

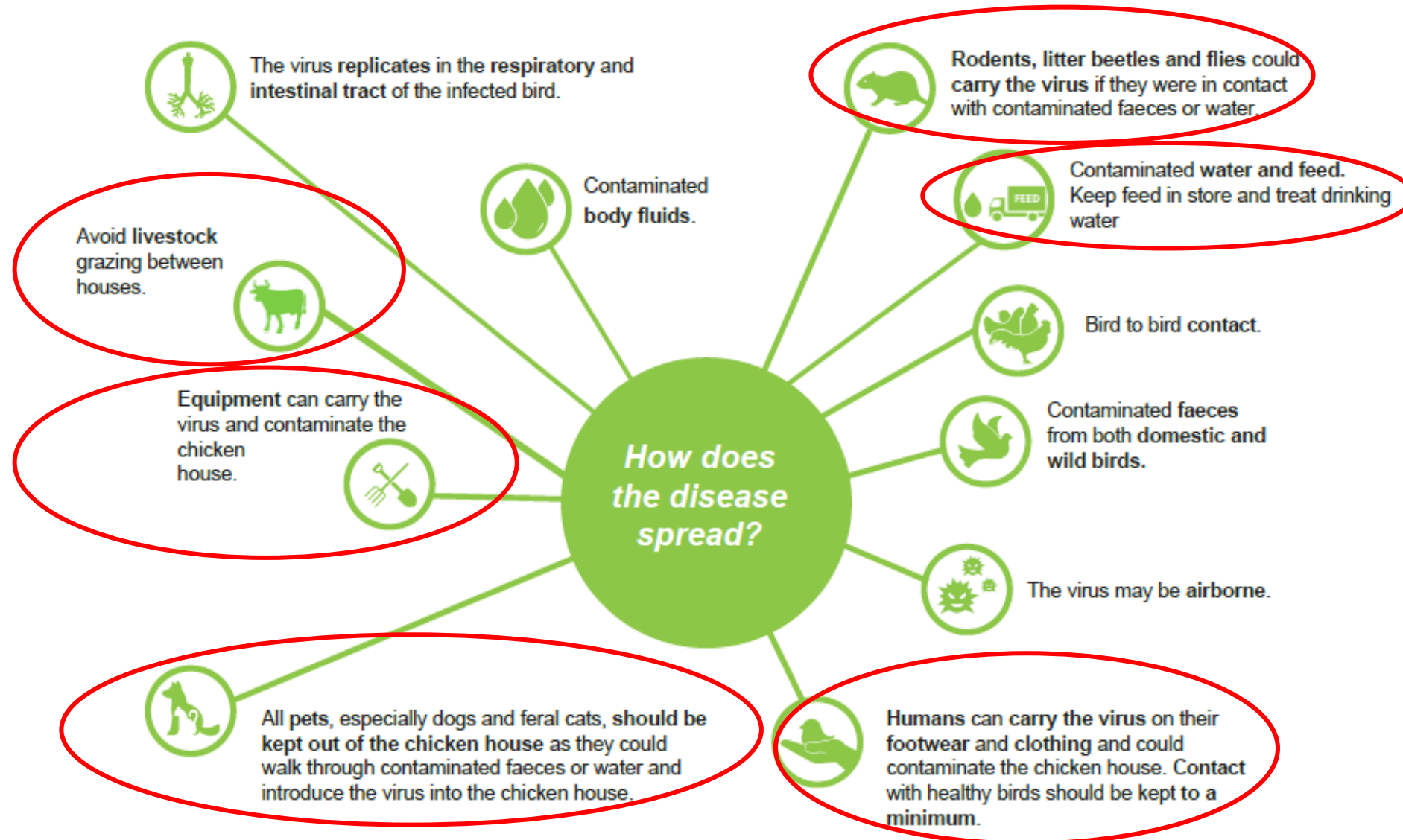


Norway Rat
7-18oz
13-18" long



Remember The BIG Picture

Mode of Transmission



Thank you



DIAG
POULTRY